

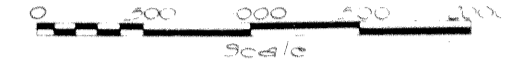
LOCATION PLAN

GUE.~21~5.90~GUERNSEY COUNTY

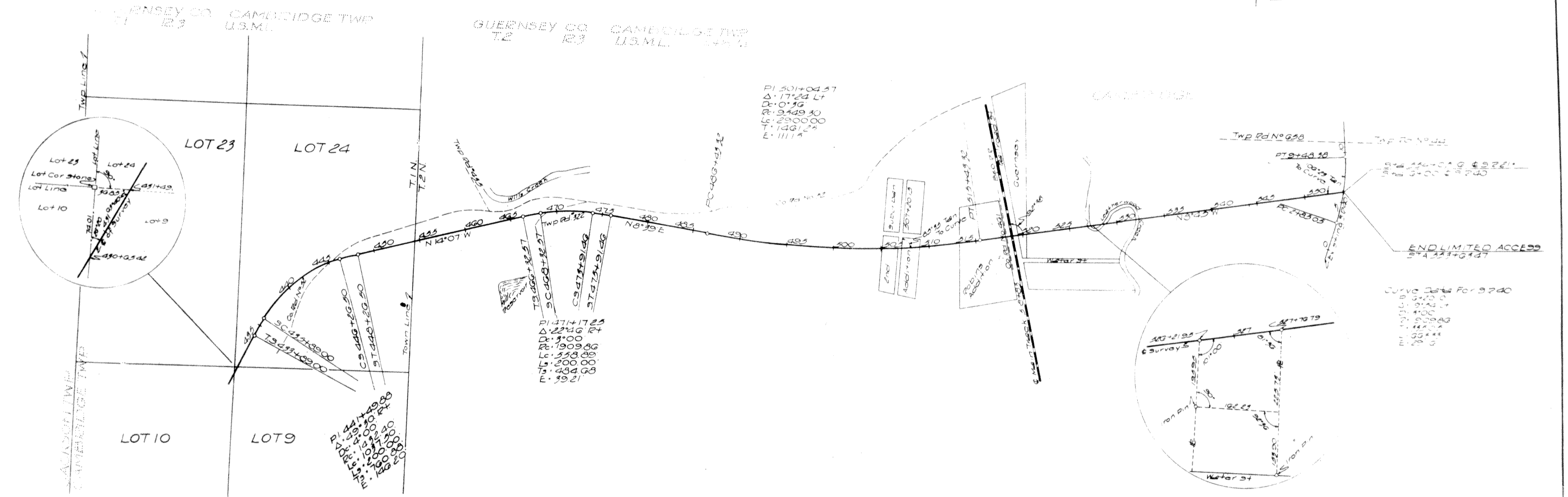
CAMBRIDGE~CALDWELL ROAD

Received 10/7/55 Time 1:15 PM
 Recorded October 7, 1955
 Plat Book 70 Page 48
 Signed Harry W. Wenger Recorder, Guernsey Co., Ohio
 Fee \$3.00 Paid 10/7/55 By: Olive Beal Deputy

Signed Oscar F. Schilling
 Oscar F. Schilling P.E. No. 129
 Date 10-3-55 Resident Division Deputy Director
 Registered Surveyor No. 129



LIMITED ACCESS



CENTER LINE REFERENCE MONUMENTS WILL BE SET AFTER CONSTRUCTION

SC STA 435+89.00	CS STA 446+26.50	POT STA 453+00	POT STA 463+00	SC STA 468+32.57	ST STA 475+91.46	PC STA 486+43.32	POC STA 495+00	POC STA 505+00	PT STA 515+43.32	POT STA 526+00	POT STA 536+00	POT STA 546+00
POC STA 444+00	ST STA 448+26.50	POT STA 458+00	TS STA 466+32.57	CS STA 473+91.46	POT STA 482+00	POC STA 490+00	POC STA 500+00	POC STA 510+00	POT STA 524+00	POT STA 534+00	POT STA 544+00	POT STA 554+00

